

TRAVEL HARD.

Matador®

SPRING/SUMMER 2024



TRAVEL HARD.

We travel because the best things in life are not things at all—they're the experiences we earn and the stories we share. Matador® started in 2014 with the mission to engineer remarkable travel equipment that enables customers to explore without limits.

PERFORMANCE

Matador® travel equipment is engineered to get you where you're going and never hold you back. Our equipment is designed by in-house team of engineers and designers and tested with real travel.

SIMPLICITY

We are travelers too. Matador® equipment is designed to solve travel problems we have experienced first-hand. Our iterative design process refines our products and eliminates frills- solving real problems with real solutions.

INNOVATION

We aren't afraid of new and different—if it's better. Leading-edge materials, advanced construction, and attention to detail let us push boundaries and build remarkable equipment that performs better.

EXPLORATION

Matador® travel equipment enables our customers to explore without limits. Remarkable equipment lets you focus on the experience, and see the world before you die.



Sustainable practices, materials, and processes are critical if we want to keep exploring the planet we live on.

At Matador®, we're dedicated to practicing sustainability throughout all aspects of our brand. Sustainability is not a marketing tool, but an important part of our brand and culture. That's why our partnerships are certified, third-party audited, and meet the standard of additionality. We go the distance to make sure we have a positive impact.

Our team tests, compares, and certifies that our sustainable materials meet or exceed our internal performance standards. We protect and enhance the local community we are proud to call home by facilitating and participating in local clean-ups. As an example, we first-hand remove hundreds of pounds of trash from local waterways annually.



Many of our products feature recycled materials. We test our recycled fabrics to ensure they perform equally or better than non-recycled fabrics.



We work with CarbonFund.org to make sure our offsets are making a difference. Our offsets are third-party certified, audited, and meet the standard of additionality.



Boulder, CO Headquarters powered by WindSource® renewable wind energy certified by Green-e Energy.



We are dedicated to our goal of being fully PFC free by 2025—and we are way ahead of schedule.



We use materials that meet Bluesign® criteria and recycled fabrics on most products- and we test them rigorously.



Our in-house repair program keeps our equipment out there. All products, in or out of warranty, are eligible for our free repair program.



We have successfully reduced plastic in our packaging and use Forest Stewardship Council® packaging materials for high volume products.

Look for symbols throughout the catalog that indicate: products built from Bluesign® materials, recycled materials, and are PFC free. Visit [Matadorup.com/pages/sustainability-report](https://www.matadorup.com/pages/sustainability-report) for more info.



Rigorously tested to perform.



Matador Team Test trip, Utah high-desert

Our Mission:

To engineer remarkable travel equipment that enables our customers to explore without limits.

Matador® equipment inspires freedom for our customers. Freedom that lets them travel how they want, adapt to changes, and push their limits. Our equipment has everything our customers need, and nothing they don't.

At Matador®, our unique culture and iterative design process make our products different. Our in-house design team sketches, sews, and 3-D prints prototypes to test new-to-world solutions for travel. We aren't afraid to take risks, and the freedom to experiment leads to innovative, patented, products that you won't find anywhere else. We never cut corners, and our equipment is rigorously tested with real-life travel to make sure our products will perform remarkably.



Designed in-house from the ground-up

WHY WORK WITH MATADOR®



Travel levels are higher than pre-pandemic and are expected to rise further



Dedicated travel stores are less prevalent than pre-pandemic.



Matador products are high quality, unique, and never found at discount retailers.

RESULT:

Travel retail is currently an under-served market.



Matador is easy to work with: Real people, local reps, and a focus on retailer success.



Matador products are built with sustainability in mind.



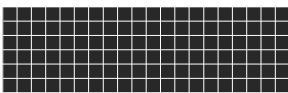
Matador protects you from Amazon. No 3rd party resellers. Most products are not available on Amazon. Available products are listed significantly above MSRP, meaning you will be offering better pricing than Amazon.



TRAVEL PACKS

Matador®'s Travel Packs are engineered to get you where you are going. Our line of packs bring outdoor expertise to the pursuit of travel with cutting-edge materials, rugged construction, and function-first features.

Matador travel packs feature high wear panels reinforced with UHMWPE (ultra-high-molecular-weight polyethylene), which delivers an incredibly high strength-to-weight ratio. These white threads are virtually impossible to tear, so the grid pattern you see creates an infallible ripstop effect, without adding any additional weight. Because of their molecular makeup, UHMWPE fibers are 7x stronger than structural steel and 3-4x stronger than nylon fibers.



UHMWPE MATERIAL





Contains recycled materials that meet Bluesign® criteria

GLOBERIDER45 TRAVEL BACKPACK

Engineered inside and out to be the ultimate primary backpack for the true adventure traveler, combining the architecture of a traditional travel pack with materials and construction typically reserved for the outdoor backpacking industry.



BLACK SKU: MATGR45001BK

ARCTIC WHITE SKU: MATGR45001W

NEW COLORWAY

PACKAGING STYLE: Hangtags



FEATURES

- 45 liter capacity, meets most airline carry-on requirements*
- Full internal frame, aluminum framestay
- Cushioned, breathable back panel/shoulder straps
- Padded, breathable hip belt
- Stowable hip belt and shoulder straps
- Large external stash pocket
- Sternum strap and load lifters
- External access admin pocket with layered organization
- External access padded laptop pocket
- Clamshell design, flexible internal organization
- Internal shockcord securement system
- Sealing YKK® zippers on all exterior pockets
- Zipper security loops on all external pockets
- Reflective zipper pulls for recognition in low light
- External daisy chain on front
- Smugglers pocket hidden behind the back panel
- External water bottle pocket
- Grab handles on top, bottom, front, back + side
- V-Compression straps on exterior

*Soft-sided design maximizes volume and conforms to carry-on requirements.

SPECS

Volume: 45 liters

Weight: 4lb 8oz (2041g)

Dimensions: 22 H x 12.8 W x 11 D in (55 H x 33 W x 28 D cm)

MATERIALS

- 420D Bluesign® nylon UHMWPE (Ultra-high-molecular-weight polyethylene) reinforced ripstop, PU waterproofing
- 420D Bluesign® recycled nylon, PU waterproofing
- 100D Bluesign® nylon ripstop, PU waterproofing
- YKK® PU coated sealing zippers + hardware
- EVA foam padded back, shoulder straps, and hip belt
- HDPE framesheet with aluminum framestay
- 210D nylon bonded thread with bartack reinforced construction



Arctic White colorway



Contains materials that meet Bluesign® criteria

SPEED STASH

The Speed Stash attaches to the front of your backpack shoulder strap to offer quick access to your phone, passport, wallet, snacks, or other small items. Perfect for travel, hiking, or daily use, the Speed Stash is engineered to attach securely to any backpack that has a sternum/chest strap, even if it's unbuckled.



BLACK SKU: MATUSP001BK

ARCTIC WHITE SKU: MATUSP001W

NEW COLORWAY

PACKAGING STYLE: Slim panel



FEATURES

- Universal design fits all backpacks with a sternum strap
- Convenient front access to important or frequently accessed items
- Utilizes locking bars to trap sternum strap hardware for a secure attachment
- Stretch front pocket
- Installs on the right or left shoulder strap

FIT

- Fits most cell phones, passports, and GPS devices.
- Universal design fits all shoulder straps with a sternum strap



Arctic White colorway

SPECS

Weight: 2.68oz (76g)

Dimensions: 7 x 4 x 2in (17.78 x 10.2 x 5.08cm)

MATERIALS

- 100D recycled nylon, PU waterproofing
- YKK® zipper
- 100D Bluesign® span
- High-cycle hook and loop installation
- Breathable spacer mesh back panel
- PU coating: Waterproofing
- Non-PFC DWR finish





Contains materials that meet Bluesign® criteria

SEG™45 TRAVEL PACK

The SEG™45 Travel Pack is built to provide organization and instant access to your stuff. Use the segmented pockets like packing cubes and stow large or dirty items in the clamshell undercarriage. The rugged backpack-duffle design is equally equipped for long flights or gritty outdoor adventures.



BLACK SKU: MATSEG45001BK

ARCTIC WHITE SKU: MATSEG45001W

NEW COLORWAY

PACKAGING STYLE: Hangtags



FEATURES

- 45 liter capacity, meets most airline carry-on requirements*
- Segmented design for organization
- External zipper access to all pockets
- Clamshell undercarriage for large or dirty items
- Exterior access laptop pocket
- External water bottle pocket, zipper closure
- Stowable backpack straps
- Detachable duffle shoulder strap
- Removable sternum strap + hip belt
- Rugged carry handles on top, bottom, and side
- Zipper security loops on all external pockets
- Reflective zipper pulls for recognition in low light
- UHMWPE-reinforced wear panels

**Soft-sided design maximizes volume and conforms to carry-on requirements.*



Detachable duffle shoulder strap included

SPECS

Volume: 45 liters

Weight: 2lbs 8oz (1134g)

Dimensions: 22 H x 13.4 W x 10.25 D in (55 H x 26 W x 23.39 D cm)

*Carry-on compliant (most airlines)**

MATERIALS

- 420D Bluesign® nylon, PU waterproofing, DWR (PFC free)
- 420D Bluesign® nylon UHMWPE (Ultra-high-molecular-weight polyethylene) reinforced ripstop, PU waterproofing
- 100D Bluesign® nylon ripstop, PU waterproofing
- YKK® PU coated sealing zippers
- 210D nylon bonded thread with bartack reinforced construction



Arctic White colorway



Contains recycled materials that meet Bluesign® criteria

SEG™28 BACKPACK

The SEG™28 is built for efficient travel and daily carry, maximizing organization and providing instant access to your stuff. Stay organized with the segmented pockets or stow large or dirty items in the large clamshell pocket. This pack includes an overbuilt shoulder harness for all-day comfort, external-access laptop pocket, and a dedicated accessory organization pocket.



BLACK SKU: MATSEG28001BK

ARCTIC WHITE SKU: MATSEG28001W

NEW COLORWAY

PACKAGING STYLE: Hangtags



FEATURES

- 28 liter capacity, meets most airline personal item requirements*
- Segmented design for organization
- Clamshell undercarriage for large or dirty items
- Cushioned, breathable back panel and shoulder straps
- Exterior access laptop pocket
- Top access essentials compartment with layered organization
- Sealing YKK® zippers on all exterior pockets
- External water bottle pocket
- Sternum strap + removable hip belt
- Luggage handle pass through
- Smugglers pocket hidden inside luggage handle pass through
- Zipper security loops on all external pockets
- Reflective zipper pulls for recognition in low light
- Grab handles on top, bottom, back, and side
- UHMWPE-reinforced wear panels
- V-Compression straps on exterior

**Soft-sided design conforms to personal item requirements and personal-item requirements for most airlines.*

SPECS

Volume: 28 liters

Weight: 2lb 3.2oz (998g)

Dimensions: 20 H x 12 W x 9.5 D in (50.8 H x 30.5 W x 24.1 D cm)

*Personal item compliant (most airlines)**

MATERIALS

- 420D Bluesign® nylon UHMWPE (Ultra-high-molecular-weight polyethylene) reinforced ripstop, PU waterproofing
- 420D Bluesign® Recycled nylon, PU waterproofing
- 100D Bluesign® nylon ripstop, PU waterproofing
- YKK® hardware + PU coated sealing zippers
- Hypalon tether loops
- EVA foam padded back and shoulder straps
- 210D nylon bonded thread with bartack reinforced construction



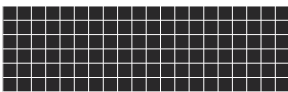
Arctic White colorway



ADVANCED SERIES

Engineered for ultralight outdoor travel. Advanced Series equipment is our lightest, most weatherproof, equipment. Technical outdoor materials, sealed seams, and an alpine feature set are expertly engineered for performance that will take you further.

The Advanced Series lineup features high wear panels reinforced with UHMWPE (ultra-high-molecular-weight polyethylene), which delivers an incredibly high strength-to-weight ratio. These white threads are virtually impossible to tear, so the grid pattern you see creates an infallible ripstop effect, without adding any additional weight. Because of their molecular makeup, UHMWPE fibers are 7x stronger than structural steel and 3-4x stronger than nylon fibers.



UHMWPE MATERIAL



Matador

LA SPORTS

FREERAIN22 WATERPROOF PACKABLE BACKPACK

The Freerain22 is an ultralight waterproof packable backpack engineered for outdoor focused adventure travel and extreme conditions.



BLACK SKU: MATFR223001BK

PACKAGING STYLE: Hangtags



FEATURES

- Waterproof main compartment with internally sealed seams
- Rolltop closure features an integrated zipper closure option for fast access or added security
- Compresses for travel, included mesh compression sack
- UHMWPE-reinforced wear panels for extreme durability, abrasion resistance, and tear strength
- Removable hip belt + adjustable sternum strap
- Two gear loops with corresponding Hypalon™-reinforced shockcord captures
- Breathable, weight distributing shoulder straps
- Water resistant front zipper pocket w/ sealing zipper
- Compression straps with side release buckles for stabilizing loads or attaching exterior equipment
- Load lifters for adjusting weight distribution + fit



SPECS

Volume: 22 liters
Weight: 10.6oz (300g)
Unpacked Dimensions: 19.5 x 10.5 x 7in (49.5 x 26.7 x 17.8cm)
Packed Dimensions: 3.75 x 3.75 x 5.75in (9.5 x 9.5 x 14.6cm)

MATERIALS

- 70D Robic® nylon UHMWPE (ultra-high-molecular-weight polyethylene) reinforced ripstop, PU waterproofing
 - 50D nylon mini ripstop, UTS waterproofing
 - Internally sealed seams
 - Nylon monomesh shoulder straps
 - Hypalon™ rolltop and tether point reinforcements
 - Number 5 YKK® PU coated sealing zippers
 - YKK® ultralight, wide entry side release buckles
 - 210D bonded nylon thread
- Coating Specs**
- UTS coating (ultra tear strength): waterproofing and tear strength increase of 30%
 - PU coating: waterproofing

FREEFLY16 PACKABLE BACKPACK

The Freefly16 is an ultralight weather resistant daypack engineered for outdoor focused travel.



BLACK SKU: MATFF163001BK

PACKAGING STYLE: Hangtags



FEATURES

- Weatherproof design with sealed seams
- Sealing zippers for weatherproofing
- Compresses for travel, included mesh compression sack
- UHMWPE-reinforced wear panels for extreme durability, abrasion resistance, and tear strength
- Adjustable sternum strap
- Two gear loops with corresponding Hypalon™-reinforced shockcord capture
- Breathable, weight distributing shoulder straps
- Water resistant front pocket with sealing zipper
- Oversized mesh side pockets
- Compression straps with side release buckles for stabilizing loads or attaching exterior equipment.



SPECS

Volume: 16 liters
Weight: 6.7oz (190g)
Unpacked Dimensions: 19 x 10 x 6in (48.3 x 25.4 x 15.2cm)
Packed Dimensions: 3.75 x 3.75 x 5.5in (9.5 x 9.5 x 14cm)

MATERIALS

- 70D Robic® nylon UHMWPE (Ultra-high-molecular-weight polyethylene) reinforced ripstop, PU waterproofing
 - 50D nylon mini ripstop, UTS waterproofing
 - Internally sealed seams
 - Reinforced nylon monomesh weight distributing shoulder straps
 - Hypalon™ reinforced tether points
 - Number 5 YKK® PU coated sealing zippers
 - YKK® ultralight, wide entry side release buckles
 - 210D bonded nylon thread
- Coating Specs**
- UTS coating (ultra tear strength): waterproofing and tear strength increase of 30%
 - PU coating: waterproofing

FREERAIN WATERPROOF PACKABLE HIP PACK

The Freerain Waterproof Packable Hip Pack provides quick access and safe storage for your essentials. Waterproof construction is engineered for outdoor focused travel.



BLACK SKU: MATFRHP001BK

PACKAGING STYLE: Hangtags



FEATURES

- Waterproof main compartment with internally sealed seams
- Rolltop closure features an integrated zipper closure option for fast access or added security
- 2-4 liter adjustable capacity
- Compresses for travel; invert into front pocket to contain straps or compress further using included mesh compression sack
- UHMWPE-reinforced wear panels for extreme durability, abrasion resistance, and tear strength
- Adjustable belt for crossbody or hip wear
- Additional front zipper pocket
- Compression straps to secure contents



SPECS

Volume: 2 liters
Weight: 4oz (115g)
Unpacked Dimensions: 10 x 5 x 3in (25.4 x 12.7 x 7.6cm)
Packed Dimensions: 3 x 3 x 4.25in (7.6 x 7.6 x 10.8cm)

MATERIALS

- 70D Robic® nylon UHMWPE (Ultra-high-molecular-weight-polyethylene), PU waterproofing
- 50D nylon mini ripstop, UTS waterproofing
- Internally sealed seams
- Nylon monomesh hip belt wings
- Hypalon rolltop and tether point reinforcements
- Number 5 YKK® PU coated sealing zippers
- YKK® ultralight, wide entry side release buckles
- 210D bonded nylon thread
- UTS coating (ultra tear strength): waterproofing and tear strength increase of 30%
- PU coating: waterproofing

FREELY PACKABLE DUFFLE

The Freely Packable Duffel provides an extra 30 liters of weatherproof storage when you need it, and nearly disappears when you don't.



BLACK SKU: MATFFD001BK

PACKAGING STYLE: Hangtags



FEATURES

- Weatherproof design with sealed seams
- Sealing zippers for weatherproofing
- Compresses for travel
- UHMWPE-reinforced wear panels for extreme durability, abrasion resistance, and tear strength
- Adjustable shoulder strap
- Grab handles on sides and ends
- Rubberized carry handles
- Compression straps with side release buckles for carrying external equipment, securing to cargo racks, or converting to backpack carry mode
- Extra-long main compartment zipper affords large opening for easy access
- Weatherproof rear zipper pocket
- Mesh front zipper pocket



SPECS

Volume: 30 liters
Weight: 8.5oz (240g)
Unpacked Dimensions: 22 x 11 x 8in (55.9 x 27.9 x 20.3cm)
Packed Dimensions: 3.75 x 3.7 x 5.5in (9.5 x 9.5 x 14cm)

MATERIALS

- 70D Robic® nylon UHMWPE (ultra-high-molecular-weight polyethylene) reinforced ripstop, PU waterproofing
- 50D nylon mini ripstop, UTS waterproofing
- Internally sealed seams
- Number 5 YKK® PU coated sealing zippers
- YKK® ultralight, wide angle side release buckles
- 210D bonded nylon thread
- Coating Specs**
- UTS coating (ultra tear strength): waterproofing and tear strength increase of 30%
- PU coating: waterproofing



ReFRACTION™ SERIES

The ReFraction Series is designed to go everywhere you go. Built with recycled materials that meet Bluesign® Criteria, this collection of packable bags is made responsibly and has organization, comfort, and style you can depend on.

NEW FOR SPRING/SUMMER 2024





Contains recycled materials that meet Bluesign® criteria

ReFRACTION™ PACKABLE BACKPACK

NEW FOR SPRING/SUMMER 2024

The ReFraction™ Packable Backpack is designed to go everywhere you go. Built from lightweight recycled nylon and materials that meet Bluesign® criteria, this daypack easily packs into its own pocket for travel.



BLACK SKU: MATOG2DP01BK

SLATE BLUE SKU: MATOG2DP01BL

ARCTIC WHITE SKU: MATOG2DP01W

PACKAGING STYLE: Hangtags



FEATURES

- Built from recycled nylon and materials that meet Bluesign® criteria
- Easily packs away into its own pocket to save space
- YKK® water resistant zippers
- Zipper security loops on main compartment
- Cushioned, breathable, contoured shoulder straps
- Stretch zipper front stash pocket
- Stretch water bottle pockets (both sides)
- Top access essentials pocket that inverts to stow bag
- Adjustable sternum strap
- Configures for rolling luggage handle pass through
- Personal item compliant

SPECS

Volume: 16 liters

Weight: 7.9oz (225g)

Unpacked Dimensions: 17 x 10 x 7.5in (43 x 25 x 19cm)

Packed Dimensions: 5.5 x 8 x 3in (13 x 20 x 8cm)

MATERIALS

- 100D recycled nylon, PU waterproofing
- 100D Bluesign® span
- Number 5 YKK® PU coated sealing zippers
- PU coating: Waterproofing
- Non-PFC DWR finish



Contains recycled materials that meet Bluesign® criteria

ReFRACTION™ PACKABLE DUFFLE BAG

NEW FOR SPRING/SUMMER 2024

The ReFraction™ Packable Duffel is designed to go everywhere you go. Built from lightweight recycled nylon and materials that meet Bluesign® criteria, this duffel easily packs into its own pocket for travel.



BLACK SKU: MATOG2W01BK

SLATE BLUE SKU: MATOG2W01BL

ARCTIC WHITE SKU: MATOG2W01W

PACKAGING STYLE: Hangtags



FEATURES

- Built from recycled nylon and materials that meet Bluesign® criteria
- Easily packs away into its own pocket to save space
- YKK® water resistant zippers
- Zipper security loops on main compartment
- Extra long zipper for easy access and visibility into main compartment
- Two stretch zipper stash pockets, one designed to fit a water bottle
- Adjustable shoulder/crossbody strap
- Easy to grip top handles
- Personal item compliant

SPECS

Volume: 25 liters

Weight: 7.9oz (225g)

Unpacked Dimensions: 1.5 x 11 x 8in (55 x 28 x 20cm)

Packed Dimensions: 7.5 x 5 x 2.75in (19 x 13 x 7cm)

MATERIALS

- 100D recycled nylon, PU waterproofing
- 100D Bluesign® span
- Number 5 YKK® PU coated sealing zippers
- PU coating: Waterproofing
- Non-PFC DWR finish





Contains recycled materials that meet Bluesign® criteria

ReFRACTION™ PACKABLE SLING

NEW FOR SPRING/SUMMER 2024

The ReFraction™ Packable Sling is designed to go everywhere you go. Built from lightweight recycled nylon and materials that meet Bluesign® criteria, this sling easily packs into its own pocket for travel.



BLACK SKU: MATOG2HP01BK

SLATE BLUE SKU: MATOG2HP01BL

ARCTIC WHITE SKU: MATOG2HP01W

PACKAGING STYLE: Hangtags



FEATURES

- Built from recycled nylon and materials that meet Bluesign® criteria
- Compact size fits the essentials like phone, wallet, and keys
- Easily packs away into its own pocket to save space
- YKK® water resistant zippers
- Zipper security loops on main compartment
- Stretch zipper front pocket
- Adjustable strap can be worn as a sling or at the waist
- Adjustable compression straps for customized fit



SPECS

Volume: 2 liters

Weight: 4oz (115g)

Unpacked Dimensions: 9 x 5 x 3in
(23 x 13 x 8cm)

Packed Dimensions: 2.5 x 7 x 2in
(6 x 18 x 5cm)

MATERIALS

- 100D recycled nylon, PU waterproofing
- 100D Bluesign® span
- Number 5 YKK® PU coated sealing zippers
- PU coating: Waterproofing
- Non-PFC DWR finish





BEAST PACKS

Built from durable, high tenacity 210D Robic® nylon, these travel specific alpine backpacks are fully equipped for rugged mountain pursuits. Available in 18 and 28 liters.



Contains materials that meet Bluesign® criteria



CHARCOAL SKU: MATBE28001BK

PACKAGING STYLE: Hangtags



BEAST™28 ULTRALIGHT TECHNICAL BACKPACK

The Beast™28 is an ultralight frame pack engineered for technical outdoor pursuits. A flexible frame suspension system provides support and torsion with movement, while the removable hip belt and sternum strap keep the backpack close to your body. Compresses for travel.

FEATURES

- 28 liter capacity
- Flexible frame that moves with your body
- Removable hip belt with zipper pockets
- Sternum strap, detachable
- Wrap around zipper on main compartment
- Hydration compatible
- Gear loops for hiking poles or ice axes
- Hypalon™ daisy-chains
- Water bottle pockets
- Two internal pockets and key loop for securing small items
- Padded breathable mesh shoulder straps and back panel
- Compression storage sack for travel

SPECS

- Volume:** 28 liters
- Weight:** 11lb 8oz (680g)
- Unpacked Dimensions:** 22 H x 11 W x 7 D in (56 H x 28 W x 18 D cm)
- Packed Dimensions:** 9 x 9 x 3.5in (22.9 x 22.9 x 8.9cm)

MATERIALS

- 210D Robic® high tenacity nylon, UTS coated, DWR finish
- 100D nylon, PU coated, DWR finish
- YKK® zippers and hardware
- EVA foam padded back, shoulder straps, and hip belt
- 210D nylon bonded thread with Bartack reinforced construction
- Coating Specs**
- UTS coating (ultra tear strength): waterproofing and tear strength increase of 30%
- PU coating: waterproofing



Packed up Beast™28



Contains materials that meet Bluesign® criteria



CHARCOAL SKU: MATBE18001BK

PACKAGING STYLE: Hangtags



BEAST™18 ULTRALIGHT TECHNICAL BACKPACK

The Beast™18 is an ultralight frame pack engineered for technical outdoor pursuits. A flexible frame suspension system provides support and torsion with movement, while the removable hip belt and sternum strap keep the backpack close to your body. Compresses for travel.

FEATURES

- 18 liter capacity
- Flexible frame that moves with your body
- Removable hip belt
- Sternum strap, detachable
- Wrap around zipper on main compartment
- Hydration compatible
- Gear loops for hiking poles or ice axes
- Hypalon™ reinforced external daisy chain
- Water bottle pockets
- Two internal pockets and key loop for securing small items
- Padded, breathable mesh shoulder straps and back panel
- Compression storage sack for travel

SPECS

- Volume:** 18 liters
- Weight:** 11lb 5oz (595g)
- Unpacked Dimensions:** 20 H x 10 W x 6.5 D in (50.8 H x 25.5 W x 16.5 D cm)
- Packed Dimensions:** 9 H x 9 W x 3.5 D in (22.9 H x 22.9 W x 8.9 D cm)

MATERIALS

- 210D Robic® high tenacity nylon, UTS coated, DWR finish
- 100D nylon, PU coated, DWR finish
- YKK® zippers and hardware
- EVA foam padded back, shoulder straps, and hip belt
- 210D nylon bonded thread with bartack reinforced construction
- Coating Specs**
- UTS coating (ultra tear strength): waterproofing and tear strength increase of 30%
- PU coating: waterproofing



Packed up Beast™18



BASE LAYER SERIES

Matador's lightweight, waterproof travel equipment designed for transporting cameras, laptops, and electronics. Flexible and durable exteriors provide lightweight padded protection while seam sealed rolltop liners provide extreme weatherproofing for superior protection.



Contains materials that meet Bluesign® criteria



BLACK SKU: MATCBL001BK

PACKAGING STYLE: Hangtags



CAMERA BASE LAYER

The Camera Base Layer keeps compact DSLR and mirrorless cameras fully protected from the elements and accessible during travel and outdoor pursuits. IPX6 rated waterproof mode is essential for outdoor photographers.

FEATURES

- Integrated drybag with fast access and full waterproof modes
- Magnetic latch for instant, one handed access
- Adjustable length for varying camera/lens combinations
- Top carry handle with integrated daisy chain
- Anodized aluminum carabiner
- Compatible with traditional camera straps
- Zipper pocket for lens caps, camera cards, or hand warmers (for maintaining battery function in cold)
- Insulative synthetic padding protects from bumps and maintains temps
- Hypalon™ reinforced anchor points and handle
- Patented

FIT

- Designed specifically for mirrorless cameras and compact DSLRs with varying lens lengths

SPECS

Weight: 5.5oz (155g)

Dimensions: 11 H x 9 W x 0.8 D in

(27.9 H x 22.8 W x 2 D cm), without camera inside

IPX6 Rated: Withstands water projected from powerful jets from any angle

MATERIALS

- 420D PU coated nylon, DWR coating (PFC free)
- 40D exterior panels, DWR
- 50D ripstop, UTS sealed seams
- Hypalon™ rolltop bag liner
- 210D nylon thread
- Magnetic Fidlock® latch

Coating Specs

- UTS coating (ultra tear strength): waterproofing and tear strength increase of 30%
- PU coating (polyurethane): durable waterproofing
- DWR coating (durable water repellent): water beads up and slicks off



Contains materials that meet Bluesign® criteria



BLACK SKU: MATLBL001BK

PACKAGING STYLE: Hangtags



LAPTOP BASE LAYER

The Laptop Base Layer is a padded, waterproof layer of protection for your laptop during travel. An integrated drybag liner provides IPX6 rated waterproofing.

FEATURES

- Integrated dry bag with fast access and full waterproof modes
- Padded exterior protects against bumps
- Fully adjustable hook and loop closure for snug, dependable fit
- External zipper pocket for chargers and accessories
- Hypalon™ and bartack reinforced construction
- Top carry handle

FIT

- Designed specifically to fit most laptops from 13-16in (33.02-40.64cm), all manufacturers

SPECS

Weight: 5.3oz (146g)

Dimensions: 13.2 x 10.2 x 0.15in (33.5 x 26 x 0.4cm)

IPX6 Rated: Withstands water projected from powerful jets from any angle

MATERIALS

- 420D PU coated nylon, DWR coating (PFC free)
- 40D softshell exterior, DWR coating
- 50D seam sealed liner, UTS coating
- Closed cell PE foam padding
- Hypalon reinforced high-cycle velcro
- 210D bonded nylon thread

Coating Specs

- UTS coating (ultra tear strength): waterproofing and tear strength increase of 30%
- PU coating (polyurethane): durable waterproofing
- DWR coating (durable water repellent): water beads up and slicks off





FLATPAK™

Matador's ultralight, space saving line of travel toiletries feature proprietary welded construction and adapt to the size of their contents.



FLATPAK™ SOAP BAR CASE

FlatPak™ Soap Bar Case is the solution for traveling with bar soap. Leak-proof design featuring Dry-Through™ Technology contains water and suds while still allowing the soap bar to dry through the material.



CHARCOAL SKU: MATFPS1001B

GARNET SKU: MATFPS1001R

NEW COLORWAY

ARCTIC WHITE SKU: MATFPS1001W

NEW COLORWAY

PACKAGING STYLE: Slim panel



FEATURES

- 3x lighter than plastic soap bar cases
- 6x more compact than other soap bar cases (with 1oz bar of soap)
- Dry-Through™ Technology lets soap dry through case so it's never mushy
- Waterproof, welded construction
- Adapts to size of soap bar as it shrinks
- Hypalon rolltop closure + YKK® buckle
- TSA approved
- Patented

3x lighter compared to most traditional plastic soap bar cases

6x more compact when compared to most soap bar cases containing 1oz bar of soap



Garnet

Arctic White

SPECS

Weight: 0.39oz (11g)

Dimensions: 4 H x 2.4 W x 1.3 D in (10.16 H x 6.1 W x 3.3 D cm), max

Fits standard size soap bars

Fits all types of bar soaps, including shampoo and conditioner bars

MATERIALS

- Waterproof 30D Cordura® ripstop nylon
- Proprietary welded construction
- Dry-Through™ Technology
- Hypalon rolltop closure



FLATPAK™ TOILETRY BOTTLES

1-PACK + 3-PACK

FlatPak™ Toiletry Bottles are designed for minimalist travel and ultralight pursuits. 5x lighter and 3.5x more compact than traditional silicone travel bottles, they only take up as much space as their contents.



1-PACK CHARCOAL SKU: MATFPB1001B

3-PACK (CHARCOAL/SLATE BLUE/SAGE)

SKU: MATFPB3001MLT

3-PACK (CHARCOAL/ARCTIC WHITE /GARNET)

SKU: MATFPB3001MLT2

NEW COLORWAY

PACKAGING STYLE: Slim panel



FEATURES

- TSA approved
- 5x lighter
- 3.5x more compact
- Large fill opening
- Waterproof fabric
- Snap loop with write-in contents indication
- Holds liquids, gels, and pastes
- Available in 1-pack or 3-pack
- Patented

Not intended for food/drink. Do not use with products that contain alcohols.

5x lighter when compared to most silicone travel bottles
3.5x more compact when compared to most silicone travel bottles when both contain enough contents for a 3 day trip (25ml).



3-Pack: Charcoal, Slate Blue, Sage

SPECS

Volume: 3oz (90mL)

Weight: 0.41oz (11.5g)

MATERIALS

- Waterproof 30D Cordura® ripstop nylon
- Proprietary welded construction
- Hypalon snap loop



3-Pack: Charcoal, Arctic White, Garnet

FLATPAK™ WATERPROOF TOILETRY CASE

The FlatPak™ Toiletry Case is an ultralight, waterproof solution to carrying your toiletries or other small items. Rolltop design enables the FlatPak™ Toiletry Case to adapt to fit the contents.



CHARCOAL SKU: MATFPC001B

GARNET SKU: MATFPC001R

NEW COLORWAY

ARCTIC WHITE SKU: MATFPC001W

NEW COLORWAY

PACKAGING STYLE: Slim panel



FEATURES

- Waterproof, leak-proof storage for toiletries or other small items
- Dry-Through™ Technology lets water evaporate through case when closed
- Flexible fabric design adapts to size of your contents
- Hypalon rolltop closure + YKK® buckle
- Hypalon hang loop for hanging in the open position
- Flat bottom design sits upright and open on counters/surfaces
- 2 liter capacity

SPECS

Volume: 2 liters, max

Weight: 1.17oz (33.2g)

Maximum Dimensions: 9.5 x 3.75 x 5.5in
(24 x 9.5 x 14cm)

MATERIALS

- Waterproof 30D Cordura® ripstop nylon
- Proprietary welded construction
- Dry-Through™ Technology
- Hypalon rolltop closure



FLATPAK™ ZIPPER TOILETRY CASE

The FlatPak™ Zipper Toiletry case is an ultralight solution to carrying your toiletries or other small items. Quick access zipper design is convenient and leakproof.



CHARCOAL SKU: MATFPZ001CH

GARNET SKU: MATFPZ001R

NEW COLORWAY

ARCTIC WHITE SKU: MATFPZ001W

NEW COLORWAY

PACKAGING STYLE: Slim panel



FEATURES

- 2.25 liter maximum capacity
- Flexible baffled design adapts to size of your contents
- Leak-proof, welded construction
- Dry-Through™ Technology lets water evaporate through material
- Sealing zipper
- Hypalon hang loop for hanging in the bathroom/shower
- Flat bottom design sits on counters for convenient access

SPECS

Volume: 2.25 liters, max

Weight: 1oz (28g)

Dimensions: 9.5 x 6.75in (24 x 17cm)

Max Dimensions: 9.5 x 6.75 x 3.5in

(24 x 17 x 9cm)

MATERIALS

- 30D Cordura®
- Proprietary coating with Dry-Through™ Technology
- Welded construction, sealing zipper



FLATPAK™ DRY BAG – 2 LITER

Engineered to an IPx7 waterproof rating, welded FlatPak™ construction offers unprecedented protection from water and weather. The 2 liter capacity is the perfect protective layer for small electronics, food, or other small valuables. The roll top closure ensures a robust seal while the clear window offers quick identification of the contents.



FEATURES

- 2 liter capacity
- Waterproof IPx7 rating
- Roll-top closure
- Fully welded construction
- Clear vertical stripe for viewing contents when closed
- Hypalon™ handle with integrated carabiner loop
- D ring tether point on roll-top
- Flat bottom design that stands up when packed
- Ultralight construction

SPECS

Volume: 2 Liters

Weight: 1.13 oz (32g)

Flat Dimensions: 12.75 x 10.75in (32.4 x 27.3cm)

Full Dimensions: 9.5 x 5.25 x 3.25in (24.1 x 13.3 x 8.3cm)

MATERIALS

- Waterproof 70D ripstop nylon
- Proprietary welded construction
- Transparent TPU welded window
- Hypalon™ rolltop closure

BLACK SKU: MATFPDB2001BK

PACKAGING STYLE: Self-hanging roll + Hangtag



FLATPAK™ DRY BAG – 8 LITER

Engineered to an IPx7 waterproof rating, welded FlatPak construction offers unprecedented protection from water and weather. The 8 liter capacity is the perfect protection for your baselayers, food, or medium sized electronics. The roll top closure ensures a robust seal while the clear window offers quick identification of the contents.



FEATURES

- 8 liter capacity
- Waterproof IPx7 rating
- Roll-top closure
- Fully welded construction
- Clear vertical stripe for viewing contents when closed
- Hypalon™ handle with integrated carabiner loop
- D ring tether point on roll-top
- Flat bottom design that stands up when packed
- Ultralight construction

SPECS

Volume: 8 liters

Weight: 2.29 oz (65g)

Flat Dimensions: 19 x 14.38in (48.3 x 36.5cm)

Full Dimensions: 16 x 8.5 x 5.5in (40.6 x 21.6 x 14cm)

MATERIALS

- Waterproof 70D ripstop nylon
- Proprietary welded construction
- Transparent TPU welded window
- Hypalon™ rolltop closure

BLACK SKU: MATFPDB8001BK

PACKAGING STYLE: Self-hanging roll + Hangtag







ACCESSORIES

Travel accessories that save space, reduce waste, and help you travel efficiently.





Contains recycled materials and materials that meet Bluesign® criteria

POCKET BLANKET

Always have a clean, dry place to sit with the Matador Pocket Blanket. Made from premium ripstop fabric with an enhanced PU waterproof coating, this ground cover keeps you clean and dry wherever you want to take a seat.



FEATURES

- Water resistant seating for 2-4 adults
- Enhanced waterproof materials for longterm ground protection
- Packs down to fit in the palm of your hand
- Puncture-Free Easy Pack Pattern for refolding and storage
- Integrated, tethered corner stakes
- Weighted corners
- Integrated corner sand pockets
- Attached storage pouch

SPECS

Weight: 3.8oz (108g)
Unpacked Dimensions: 63 x 44in (160 x 110cm)
Packed Dimensions: 4.5 x 2.7 x 1.1in (11.4 x 6.6 x 2.8cm)

MATERIALS

- 20D Ripstop with waterproof PU coating (PFC free)
- 100D Bluesign® span
- 70D up-cycled polyester
- Metal ground stakes

BLACK SKU: MATL5001BK

SLATE BLUE SKU: MATL5001BL

NEW COLORWAY

ARCTIC WHITE SKU: MATL5001W

NEW COLORWAY

PACKAGING STYLE: Slim panel



Contains recycled materials and materials that meet Bluesign® criteria

POCKET BLANKET MINI

Always have a clean, dry place to sit with the Matador Pocket Blanket Mini. Made from premium ripstop fabric with an enhanced PU waterproof coating, this ground cover keeps you clean and dry wherever you want to take a seat.



FEATURES

- Water resistant seating for 1-2 adults
- Enhanced waterproof materials for longterm ground protection
- Packs down to fit in the palm of your hand
- Puncture-free Easy Pack Pattern for refolding and storage
- Detachable drawstring storage bag
- Hang loop on storage bag
- Integrated tether points on corners

SPECS

Weight: 1.3oz (37g)
Unpacked Dimensions: 44 x 28in (110 x 70cm)
Packed Dimensions: 3 x 1.6 x 0.8in (7.6 x 4 x 2cm)

MATERIALS

- 20D Ripstop with waterproof PU coating (PFC free)
- 100D Bluesign® span
- 70D up-cycled polyester
- Paracord drawstring

BLACK SKU: MATS5001BK

SLATE BLUE SKU: MATS5001BL

NEW COLORWAY

ARCTIC WHITE SKU: MATS5001W

NEW COLORWAY

PACKAGING STYLE: Slim panel



DROPLET WATER-RESISTANT STUFF SACK

The Droplet is a water-resistant stuff sack that stows in a silicone keychain case for convenient carry. Waterproof fabric and sealed seams provide weatherproof storage for small items or contains wet items to keep your other gear dry. The 2.5 liter bag features a secure draw-cord closure and a loop for hanging or tethering.



FEATURES

- 2.5 liter capacity
- Water-resistant, leak-proof construction
- Sealed internal seams
- Drawstring closure
- Silicone keychain case
- Stainless steel key ring

SPECS

Volume: 2.5 liters
Weight: 0.8oz (23g)
Unpacked Dimensions: 9 H x 6.5 W x 3.25 D in (23 H x 16.5 W x 8.25 D cm)
Packed Dimensions: 2.5 H x 1.25 D in (6.35 H x 3.18 D cm)

MATERIALS

- Bag: 20D nylon ripstop with PU waterproof coating
- Keychain case: Silicone, stainless steel key ring

BLACK SKU: MATDRS3001BK

SLATE BLUE SKU: MATDRS3001B

PACKAGING STYLE: Gallery box



Black



NANODRY PACKABLE BEACH TOWEL

The NanoDry Packable Beach Towel is a compact and absorbent solution for keeping a beach towel on hand. This large beach towel is made from quick drying nanofiber material that absorbs up to 2.3x its weight in water. Use the built-in zipper pocket to store keys, cash, or a phone. When the towel is not in use, pack into that same pocket for convenient travel.

FEATURES

- Ultralight nanofiber material
- Absorbs 2.3x its own weight in water
- Large beach towel size, 60 x 30in (76 x 152.5cm)
- Quick drying
- Hidden zipper pocket for keys/phone that inverts into storage bag
- Machine washable

SPECS

Weight: 5.5oz (155g)
Unpacked Dimensions: 60 x 30in (76 x 152.5cm)
Packed Dimensions: 6 x 5 x 1.75in (15.25 x 12.7 x 4.5cm)

MATERIALS

- Matador's nanofiber material (Absorbs 2.3x its own weight in water), PFA free
- YKK® Zippers

CHARCOAL SKU: MATBCHT001CH

SLATE BLUE SKU: MATBCHT001BL
NEW COLORWAY

PACKAGING STYLE: Sleeve





ULTRALIGHT TRAVEL TOWEL – LARGE

The Large UL Travel Towel is designed for ultralight travel. The nanofiber material is compact when folded, but absorbs 2.3x its weight in water and dries quickly. Mesh storage bag saves weight and space when it's at a premium.

FEATURES

- Ultralight nanofiber material
- Absorbs 2.3x its own weight in water
- Side release buckle hang loop on towel
- Ultralight powermesh storage bag with Hypalon handle and hang loop
- Machine Washable

SPECS

Weight: 2.9oz (81g)
Unpacked Dimensions: 47 x 24in (120 x 60cm)
Packed Dimensions: 4.3 x 2.2in round (11 x 5.6cm round)

MATERIALS

- Matador's nanofiber material (Absorbs 2.3x its own weight in water), PFC-free

CHARCOAL SKU: MATULTL001CH

PACKAGING STYLE: Gallery box



ULTRALIGHT TRAVEL TOWEL – SMALL

The small UL Travel Towel is designed for ultralight travel. The Nanofiber material is compact when folded, but absorbs 2.3x its weight in water and dries quickly. Mesh storage bag saves weight and space when it's at a premium.

FEATURES

- Ultralight nanofiber material
- Absorbs 2.3x its own weight in water
- Side release buckle hang loop on towel
- Ultralight powermesh storage bag with Hypalon handle and hang loop
- Machine Washable

SPECS

Weight: 0.88oz (25g)
Unpacked Dimensions: 15 x 15in (39 x 39cm)
Packed Dimensions: 3 x 1.2in round (7.6 x 3cm round)

MATERIALS

- Matador's nanofiber material (Absorbs 2.3x its own weight in water), PFC-free



CHARCOAL SKU: MATULTS001CH

PACKAGING STYLE: Gallery box



NANODRY PACKABLE SHOWER TOWEL

This full-sized shower towel is designed for all-around, efficient travel. The nanofiber material absorbs 2.3x its own weight in water and dries quickly. An included silicone case with a carabiner makes it easy to attach the towel to the outside of your pack when not in use.



FEATURES

- Lightweight nanofiber material
- Absorbs 2.3x its own weight in water
- Quick drying
- Silicone travel case with carabiner
- Front release buckle on towel for hanging
- Machine washable

SPECS

- Weight:** 5.6oz (160g)
- Case Dimensions:** 5.2 x 3.2 x 2in (13.21 x 8.13 x 5.08cm)
- Towel Dimensions:** 52 x 24in (132 x 60cm)

MATERIALS

- Towel: Nanofiber material, PFC-free
- Travel case: Silicone, anodized aluminum carabiner

CHARCOAL SKU: MATNDL2001CH

SLATE BLUE SKU: MATNDL2001B

BLACK GRANITE SKU: MATNDL2001BKW

PACKAGING STYLE: Gallery box



Black Granite, Slate, and Charcoal

NANODRY TREK TOWEL

This hand/face-sized towel is designed for all-around, efficient travel. The nanofiber material absorbs 2.3x its own weight in water and dries quickly. An included silicone case with a keyring makes it easy to attach the towel to the outside of your pack when not in use.



FEATURES

- Lightweight nanofiber material
- Absorbs 2.3x its own weight in water
- Quick drying
- Silicone travel case with keyring
- Front release buckle on towel for hanging
- Machine washable

SPECS

- Weight:** 2oz (34g)
- Case Dimensions:** 2.7 x 1.9 x 1.3in (6.89 x 4.83 x 3.3cm)
- Towel Dimensions:** 15 x 15in (39 x 39 cm)

MATERIALS

- Towel: Nanofiber material, PFC-free
- Travel case: Travel case: Silicone, stainless keyring

CHARCOAL SKU: MATNDS2001CH

SLATE BLUE SKU: MATNDS2001B

BLACK GRANITE SKU: MATNDS2001BKW

PACKAGING STYLE: Gallery box



TOOTHBRUSH CAPS

2-PACK

Matador Toothbrush Caps are engineered to protect your toothbrush when you pack it. Made from food safe silicone, they protect toothbrush bristles from damage and contamination during transit. Simple, flexible design ensures a secure fit for most toothbrushes and can easily be cleaned by hand or in the dishwasher. BPA and PVC free.



FEATURES

- One size fits most toothbrushes
- Easy to use, secure fit
- Food safe silicone is BPA-free and PVC-free
- Dishwasher safe and easy to clean interior
- Two colors in each set: Charcoal and Light Grey

SPECS

Dimensions: 1.08 x 2.24 x 0.72in
(2.75 x 5.7 x 1.83cm)

Weight: 0.28oz (8g)

MATERIALS

- Food safe silicone
- BPA-free and PVC-free

CHARCOAL/LIGHT GREY SKU: MATTC2001BK

PACKAGING STYLE: Gallery box



REFILLABLE TOOTHPASTE TUBES

2-PACK

Designed to replace single-use mini tubes for travel. Refill indefinitely with your preferred toothpaste to reduce waste and eliminate a trip to the store. Each kit comes with a one-week tube and a two-week tube, so you never have to worry about bringing too much or not enough. Both tubes are TSA approved.



FEATURES

- Refillable design, remove sliding clip and refill through end
- Standard screw cap opening
- Reduces waste from disposable travel-sized products
- Multi-layer construction with vapor barrier prevents contents from drying out
- TSA approved 1 and 2 week toothpaste volumes
- Easy to clean, dishwasher safe
- Designed for toothpaste

SPECS

1 WEEK TUBE

Volume: 0.74oz (22mL)

Dimensions: 3.9 x 1.8 x 0.94in (10 x 4.5 x 2.4cm)

Weight: 0.25oz (7g)

2 WEEK TUBE

Volume: 1.1oz (35mL)

Dimensions: 4.8 x 1.8 x 0.94in
(12.3 x 4.5 x 2.4 cm)

Weight: 0.26oz (7.4g)

MATERIALS

- PE bottle, PP cap, nylon 66 sliding clip
- EVOH vapor barrier, 3 layer construction
- BPA/PVC free
- Food Safe

**Designed for toothpaste, only. Do not use for low viscosity fluids, oils, or perfumes.*

BLACK/WHITE SKU: MATTT2001BKW

PACKAGING STYLE: Slim panel



TRAVEL EARPLUGS KIT

The Travel Earplugs Kit is a simple way to keep your earplugs accessible during travel. The silicone keychain case keeps earplugs clean and attaches to a bag or zipper pull. Each kit includes three pairs of industry-leading 32 dB NRR earplugs and 2 silicone cases.



FEATURES

- 3 pairs of comfortable memory foam earplugs
- High performance earplugs, noise reduction rated 32 dB NRR
- 2 silicone cases to use as a keychain or zipper puller
- Patented

SPECS

Weight: .04oz (7g), case + 2 ear plugs
Case Dimensions: 2.4 x 0.6in (6 x 1.5cm)

KIT INCLUDES

- 2 Silicone cases
- 3 pairs of earplugs

MATERIALS

- 32 dB Noise Reduction Rated (NRR) memory foam
- Silicone cases
- Stainless steel key ring

CHARCOAL/LIGHT GREY SKU: MATEP2001BW

PACKAGING STYLE: Gallery box



WATERPROOF PILL CANISTER

The Waterproof Pill Canister is designed to keep your pills and supplements dry and organized during travel. The durable aluminum shell protects your pills from the demands of travel, while an airtight seal provides full waterproofing. Hang it outside your pack, on your keychain, or in your bathroom using the included hang loop. The Waterproof Pill Canister makes travel with supplements simple, organized, and seamless.

FEATURES

- Waterproof (IPX4 rated)
- Crush-proof anodized aluminum shell
- Sliding insert with 7 numbered slots for organization, one week capacity
- Easy access design, push bottom or pull from top to open
- Food safe, BPA-free, and PVC-free
- Paracord hang loop
- Dishwasher safe, two-piece design

SPECS

Weight: 2.9oz (83g)
Dimensions: 7.6 x 1.4 x 0.95in (19.3 x 3.5 x 2.4cm)

MATERIALS

- Anodized aluminum shell
- Polypropylene compartments
- Silicone seals
- All materials are food safe, BPA-free, and PVC-free*

CHARCOAL SKU: MATWPC001G

PACKAGING STYLE: Slim panel



WATERPROOF TRAVEL CANISTER – 40ML

The Waterproof Travel Canisters are designed for organizing small items during transit. The durable aluminum construction keeps contents safe and dry. Pull the tab upwards to break the seal and easily remove the silicone lids. Perfect for pills, snacks, jewelry, headphones, and more.



FEATURES

- IPX7 rated waterproofing: can be submerged up to 1 meter in water for 30 minutes
- Lightweight aluminum bottom
- Silicone cap with pull tab for easy opening
- Food safe, BPA-free, and PVC-free
- TSA compliant volume
- Not intended for fluids

SPECS

Volume: 1.3fl oz (40mL), TSA compliant
Weight: 17g (0.6oz)
Dimensions: 2.7 x 1.3in diameter (6.89 x 3.3cm diameter)

MATERIALS

- Aluminum canister bottom with food safe interior
- Silicone lid made from food safe materials

CHARCOAL SKU: MATCAN51001G

PACKAGING STYLE: Slim box



WATERPROOF TRAVEL CANISTER – 100ML

The Waterproof Travel Canisters are designed for organizing small items during transit. The durable aluminum construction keeps contents safe and dry. Pull the tab upwards to break the seal and easily remove the silicone lids. Perfect for pills, snacks, jewelry, headphones, and more.



FEATURES

- IPX7 rated waterproofing: can be submerged up to 1 meter in water for 30 minutes.
- Lightweight aluminum bottom
- Silicone cap with pull tab for easy opening
- Food safe, BPA-free, and PVC-free
- TSA compliant volume
- Not intended for fluids

SPECS

Volume: 3.4fl oz (100mL), TSA compliant
Weight: 56g (2oz)
Dimensions: 1.3 x 3in diameter (3.3 x 7.62cm diameter)

MATERIALS

- Aluminum canister bottom with food safe interior
- Silicone lid made from food safe materials

CHARCOAL SKU: MATCANL1001G

PACKAGING STYLE: Slim panel



BETTER TETHER GEAR STRAPS

2-PACK

The Better Tether is a 6.5ft (2m) nylon tether designed to strap gear to backpacks, motorcycles, roof racks, and more. Lightweight aluminum hardware on both ends of the tether make it easy to tighten or loosen from either end. With a 200lb (90kg) load rating, the Better Tether is optimized for both security and ease of use. Comes in pack of 2.



FEATURES

- Dual side adjustment for ease of use
- Quick release pull tabs
- 6.5ft (2m) long
- 200 pound (90.72kg) maximum load rating
- Anodized aluminum hardware

SPECS

Weight: 0.8oz (23g)
Length: 6.5ft (2m)
Maximum Load: 200lbs (90.72kg)

Weight rating is approximate and is not guaranteed. Do not use as a safety device under any circumstance. Not for climbing. Matador is not responsible for damage to user or their property as a result of the use or misuse of this product.

MATERIALS

- Nylon webbing
- Anodized aluminum hardware
- Hypalon touch points and pull tabs

CHARCOAL SKU: MATTH2M2001G

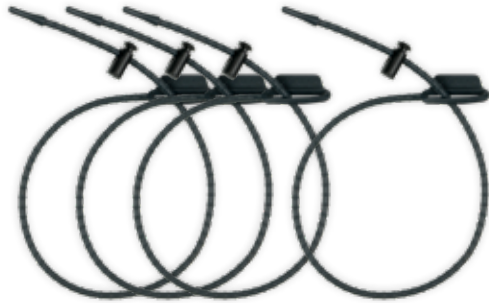
PACKAGING STYLE: Slim panel



RE-TIES™ REUSABLE ZIP TIES

4-PACK

Re-ties™ are reusable rubber zip ties designed to bundle loose items, attach gear to backpacks, and more. Infinitely useful and eco-friendly, the 12 inch Re-Ties™ are durable, versatile, and easy to use and reuse. Comes in pack of 4.



FEATURES

- Reusable
- Adjustable from 1-12in (2.54-30.48cm) in circumference
- Holds up to 15lbs (6.8kg)
- Rubber tie with easy to adjust plastic toggle
- Comes as a 4-pack

SPECS

Dimensions: 12in (30.5cm)
Maximum Load: 15lbs (6.8kg)

Weight rating is approximate and is not guaranteed. Do not use as a safety device under any circumstance. Not for climbing. Matador is not responsible for damage to user or their property as a result of the use or misuse of this product.

MATERIALS

- Proprietary rubber composite

CHARCOAL SKU: MATTIES4001G

PACKAGING STYLE: Slim panel





BETALOCK™ – CARABINER FORMAT TRAVEL LOCK

NEW FOR SPRING/SUMMER 2024

The BetaLock™ is a carabiner style lock designed for travel. This TSA-compliant lock is forged from aircraft grade aluminum, making it lightweight and convenient to carry. Clip to your water bottle, bag, or other personal items and use the optional locking feature to prevent opportunistic grab-and-go theft. Available in multiple colors, the BetaLock™ is an expert way to secure, identify, and customize anything you're traveling with.

FEATURES

- Carabiner format with easy-to-use spring gate
- Locking and non-locking capability
- Forged from light and durable aircraft grade aluminum
- Dead-bolt style locking gate prevents grab-and-go theft
- 2 Keys included
- TSA compliant

Do not use for climbing or suspending heavy or dangerous loads. The BetaLock™ is not intended for use as a load bearing device.

SPECS

Dimensions: 3.7 H x 2.5 W x 0.47 D in (9.3 x 6.3 x 1.1 cm)

Weight: 1.94oz (55g)

MATERIALS

- 6061 aluminum
- Anodized finish
- Includes 2 aluminum keys

- **METAL SKU:** MATQLL001SLV
- **MATTE BLACK SKU:** MATQLL001BK
- **GOLD SKU:** MATQLL001GLD
- **SHADOW GREEN SKU:** MATQLL001GRN
- **ORCHID SKU:** MATQLL001PRP
- **CANYON ORANGE SKU:** MATQLL001ORG
- **GLACIER BLUE SKU:** MATQLL001BL

PACKAGING STYLE: Slim panel



Metal, Matte Black, Gold, Glacier Blue, Shadow Green, Canyon Orange, Orchid



BETALOCK™ ACCESSORY CABLE

NEW FOR SPRING/SUMMER 2024

The BetaLock™ Accessory Cable is designed to work alongside the BetaLock™ for added versatility while you travel. This 24" stainless steel cable enables you to secure multiple zippers on your bag, capture larger items like helmets and jackets, or secure hard-to-access things like lockers. Prevent opportunistic grab-and-go theft with this Accessory Cable and the BetaLock™.

FEATURES

- 24in (60.9cm) cable length with loops on both ends
- Works with Matador BetaLock™
- Silicone keeper loop secures cable for travel
- Stainless, rust proof, coated cable
- Locking nut on one end for using with lockers
- Fits through zipper pulls on Matador bags to secure
- TSA compliant

SPECS

Weight: 0.75oz (21.4g)

Cable Length: 24in (60.9cm)

MATERIALS

- Silicone keeper loop
- Stainless steel cable
- TPU coating
- 6061 aluminum lock-nut



BLACK SKU: MATQLCB001BK

PACKAGING STYLE: Slim panel





Contains recycled materials that meet Bluesign® criteria



- **BLACK SKU:** MATQLL001PRP
- **SLATE BLUE SKU:** MATQLL001ORG
- **ARCTIC WHITE SKU:** MATQLL001BL

PACKAGING STYLE: Slim panel



PACKING CUBE SET

NEW FOR SPRING/SUMMER 2024

Designed to make getting to your destination streamlined and organized. These packing cubes are built to last with durability-focused construction, brand name YKK® zippers, and sustainable outdoor materials. An unmatched value, this essential packing cube set offers quality and performance at a price that makes sense

FEATURES

- Three sizes included in each
- YKK® 2-way zippers
- Sustainable outdoor materials
- Available in 3 colorways

MATERIALS

- 100D Bluesign® recycled nylon, PU waterproofing
- Number 5 YKK® zippers
- PU coating: waterproofing
- Non-PFC DWR finish

SPECS

SMALL CUBE

Dimensions: 3.75 L x 10 W x 4 H in
(9.5 L x 25.4 W x 10.1 H cm)

Weight: 1.53oz (43.3g)

MEDIUM CUBE

Dimensions: 7.5 L x 10 W x 4 H in
(19 L x 25.4 W x 10.1 H cm)

Weight: 1.96oz (55.5)

LARGE CUBE

Dimensions: 11.5 L x 10 W x 4 H in
(29.2 L x 25.4 W x 10.1 H cm)

Weight: 2.37oz (67.1g)



TRAVEL PACKS



NEW COLORWAYS S/S 2024
GLOBERIDER45
TRAVEL BACKPACK



NEW COLORWAYS S/S 2024
SEG™45
TRAVEL PACK



NEW COLORWAYS S/S 2024
SEG™28
BACKPACK

ADVANCED SERIES



FREERAIN22 WATERPROOF
PACKABLE BACKPACK



FREEFLY16 PACKABLE
BACKPACK



FREEFLY PACKABLE DUFFLE



FREERAIN WATERPROOF
PACKABLE HIP PACK

ReFRACTION™ SERIES



NEW FOR S/S 2024
ReFRACTION™
PACKABLE BACKPACK



NEW FOR S/S 2024
ReFRACTION™
PACKABLE DUFFLE BAG



NEW FOR S/S 2024
ReFRACTION™
PACKABLE SLING

BEAST SERIES



**BEAST™28 ULTRALIGHT
TECHNICAL BACKPACK**



**BEAST™18 ULTRALIGHT
TECHNICAL BACKPACK**

BASE LAYER SERIES



CAMERA BASE LAYER



LAPTOP BASE LAYER

FLATPAK™ SERIES



**NEW COLORWAYS S/S 2024
FLATPAK™
ZIPPER TOILETRY CASE**



**NEW COLORWAYS S/S 2024
FLATPAK™
WATERPROOF TOILETRY CASE**



**NEW COLORWAYS S/S 2024
FLATPAK™
TOILETRY BOTTLE(S)**



**NEW COLORWAYS S/S 2024
FLATPAK™
SOAP BAR CASE**



**FLATPAK™ DRY BAG
8 LITER**



**FLATPAK™ DRY BAG
2 LITER**

MATADOR ACCESSORIES



NEW COLORWAYS S/S 2024
POCKET BLANKET +
POCKET BLANKET MINI



ULTRALIGHT TRAVEL TOWELS



NANODRY SHOWER
+ TREK TOWEL



NEW COLORWAY S/S 2024
PACKABLE BEACH TOWEL



DROPLET WATER-RESISTANT
STUFF SACK



TRAVEL EARPLUG KIT



TOOTHBRUSH CAPS



REFILLABLE
TOOTHPASTE TUBES



WATERPROOF TRAVEL
CANISTERS



WATERPROOF PILL
CANISTER



NEW FOR S/S 2024
BETALOCK™ - CARABINER
FORMAT TRAVEL LOCK



NEW FOR S/S 2024
BETALOCK™
ACCESSORY CABLE



NEW COLORWAY S/S 2024
SPEED STASH



BETTER TETHER
GEAR STRAPS



RE-TIES™
REUSABLE ZIP TIES



NEW FOR S/S 2024
PACKING CUBES
SET



DISPLAY / POINT OF PURCHASE OPTIONS

COUNTER TOP DISPLAY

- **Overall Dimensions:** 23.75in W x 20.75in H x 9in D
(60.33cm W x 50.71cm H x 22.86cm D)
- **Capacity:** Ideal SKU count, 10-12

SKU: MATDIST22



Counter top display example with product

VERTICAL MERCHANDISER

- **Overall Dimensions:** 2.5in W x 32.5in H x 1.5in D
(6.35cm W x 82.55cm H x 3.81cm D)
- **Capacity:** 12 hooks

SKU: MATDISCLIP2



Vertical merchandiser example with product

DISPLAY / POINT OF PURCHASE OPTIONS

SLAT WALL DISPLAY/INVENTORY ARM

- **Overall Dimensions:** 13in W x 2.25in H x 7in D (33.02cm W x 5.72cm H x 50.06cm D)
- **Capacity:** Display t-bar accommodates 1 unit packed out. Lower inventory arm holds 3-5 units depending on style (i.e. SEG=3, Advanced Series and On-Grid Series=up to 5 units)

SKU: MATDISTBAR22



Inventory arm display example with product—side view

SLAT WALL LOGO PLACARD

- **Overall Dimensions:** 12in W x 5in H x 2in offset depth to wall (30.48cm W x 12.7cm H x 5.08cm offset depth to wall)
- **Material:** Sintra face plate (black) with white writing.

SKU: MATDISPLAC22



Display example of slat wall arrangement. Slat wall fixture not provided.

CONTACT

SALES:

Interested in carrying Matador products in your store? Do you currently sell Matador products and need to re-order? Curious about our retail display options?

Email: sales@matadorup.com

Phone: 1.720.242.6437

MARKETING:

Requests, Opportunities, Information.

Email: marketing@matadorup.com

Phone: 1.720.242.6437

CUSTOM PRODUCTS + CORPORATE GIFTING:

matadorup.com/pages/corporate-gifting

Email: custom@matadorup.com

Phone: 1.720.242.6437

DISTRIBUTION:

Looking for distribution in your country?

Visit: matadorup.com/pages/international-distribution

Email: sales@matadorup.com

HEADQUARTERS:

All Matador products are designed and engineered at our headquarters in Boulder, Colorado.

WEBSITE:


matadorup.com

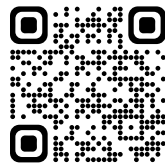
WARRANTY:

For details visit: matadorup.com/pages/warranty

SOCIAL MEDIA:

 [@matadorequipment](https://twitter.com/matadorequipment)

 [@matadortravelequipment](https://facebook.com/matadortravelequipment)



Scan this
code to
view the
Matador®
B2B Portal



Scan this
code to
view the
Matador®
B2B Portal

MATADORUP.COM